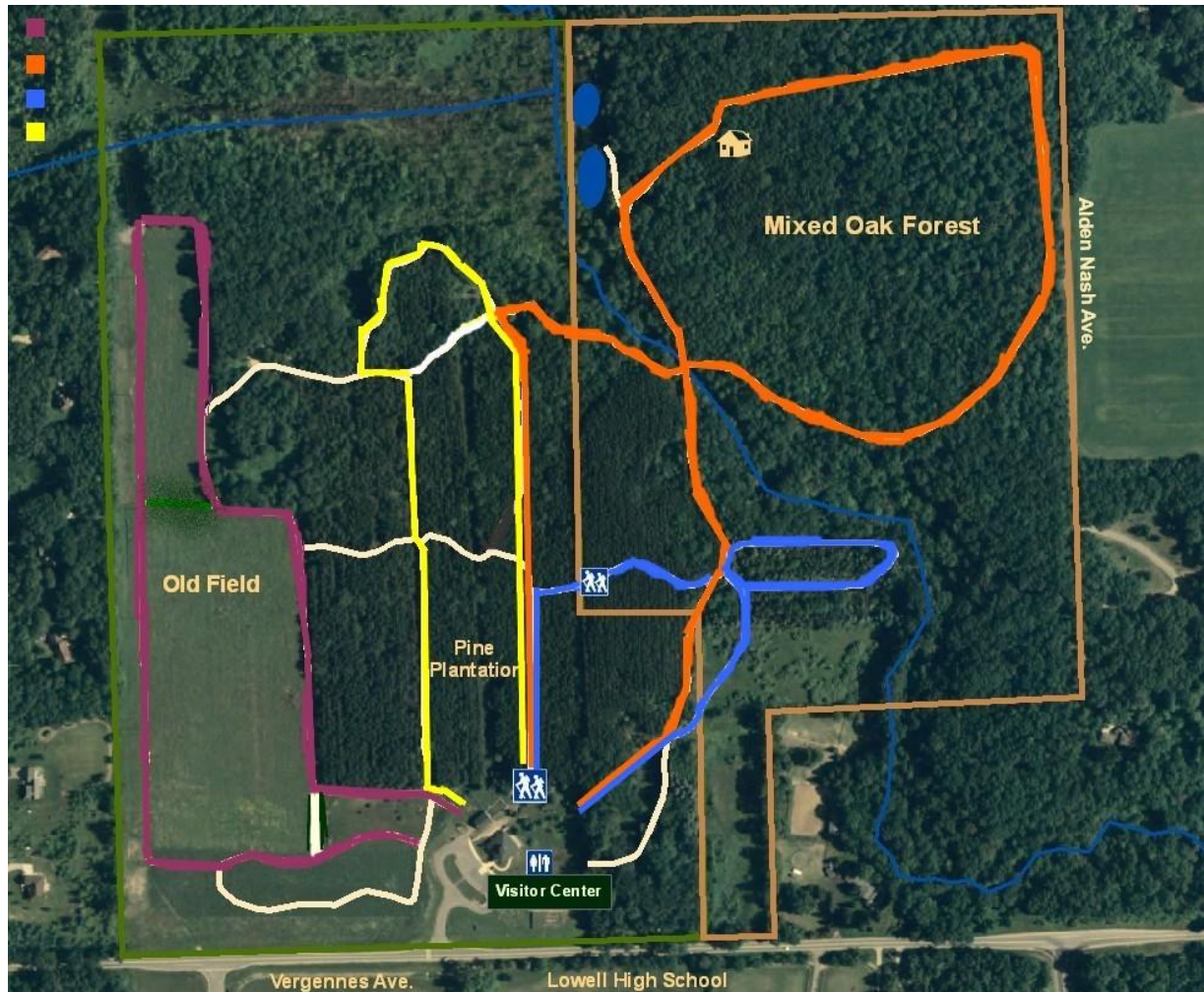


# Wittenbach/Wege Center – Trail Map

Agriscience & Environmental Education

11715 Vergennes Lowell, MI 49331 616-987-2565 www.lowellschools.com



Corncob Corner Trail (Purple): 0.96 miles  
Trillium Ridge Trail (Blue): 0.64 miles  
Chickadee Chatter Loop (Orange): 1.39 miles  
Conifer Crossing Trail (Yellow): 0.70 miles

## Trail Guidelines

WWC trails are open to foot traffic only during daylight hours, 365 days a year. For the preservation of our plants and animals and everyone's enjoyment: Please respect these rules.

- ⇒ Stay on the trails
- ⇒ No bicycles or motorized vehicles
- ⇒ Respect all living things, Do not pick wildflowers and plants
- ⇒ Water is OK, but please refrain from picnicking, eating or littering
- ⇒ **DOGS ARE WELCOME ONLY IF THEY ARE LEASHED AT ALL TIMES.** Please be courteous and clean up all animal waste and dispose at trash bin by the barn. Waste bags are available at trail head.
- ⇒ Horses are welcome, only on the Corncob Corner Trail (prairie loop). Horse traffic is not allowed on the preserve or wooded trails.

**Remember... You are nature's guest! Thank You!**